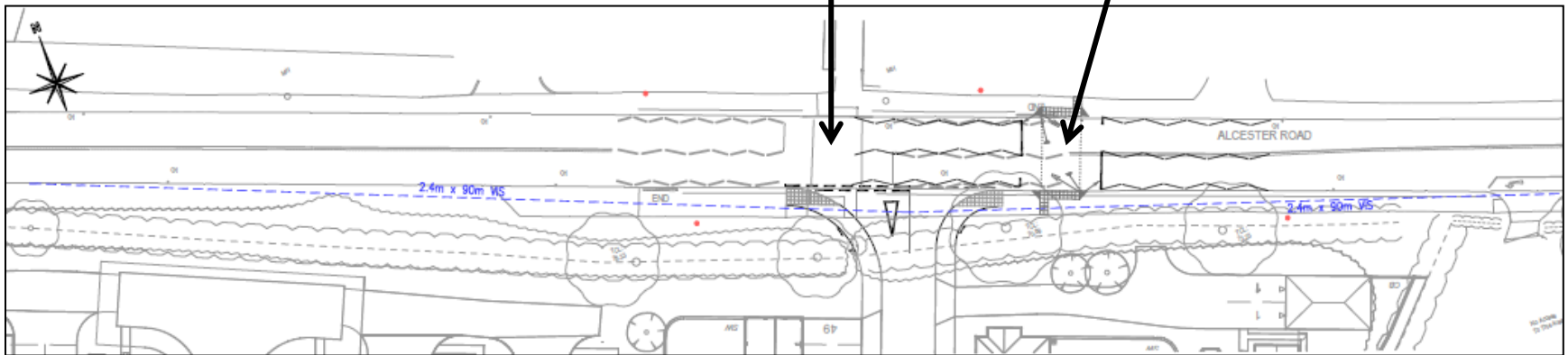


Location plan

Current crossing position

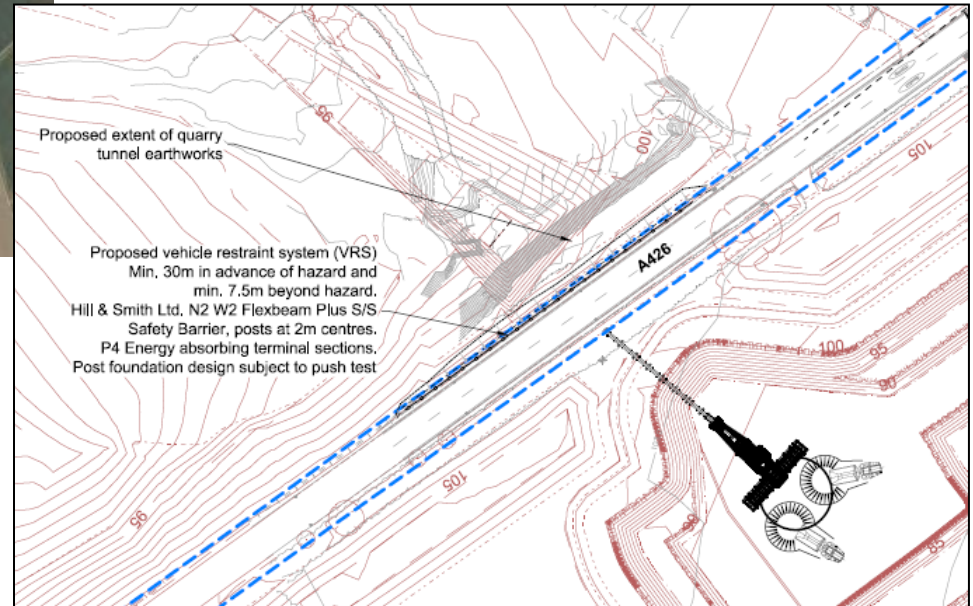
Proposed crossing position



S278 scheme:  
A422 Alcester Road, Stratford-upon-Avon  
New site access and relocated Toucan crossing



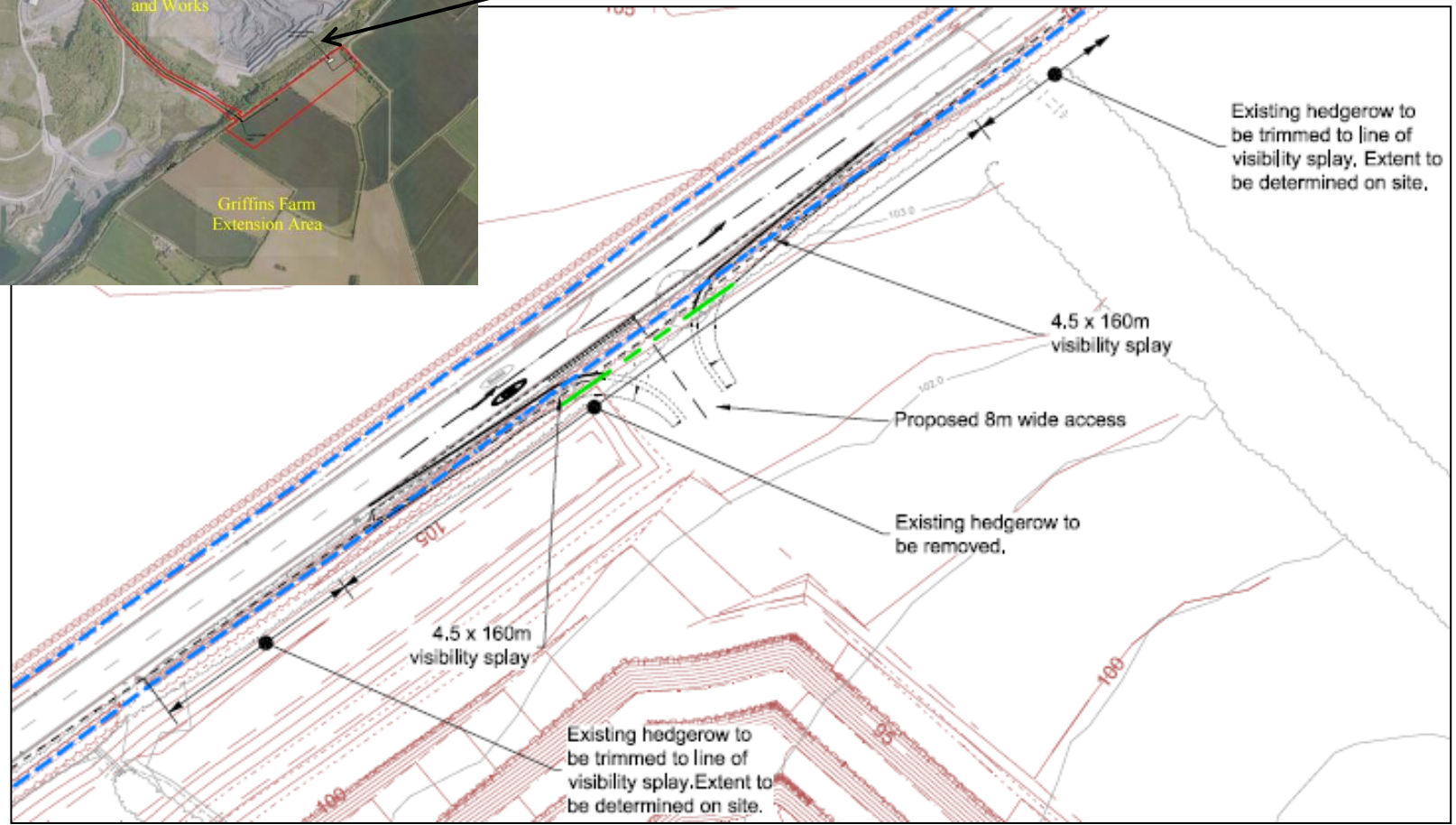
Road restraint over tunnel



## Appendix B(ii)



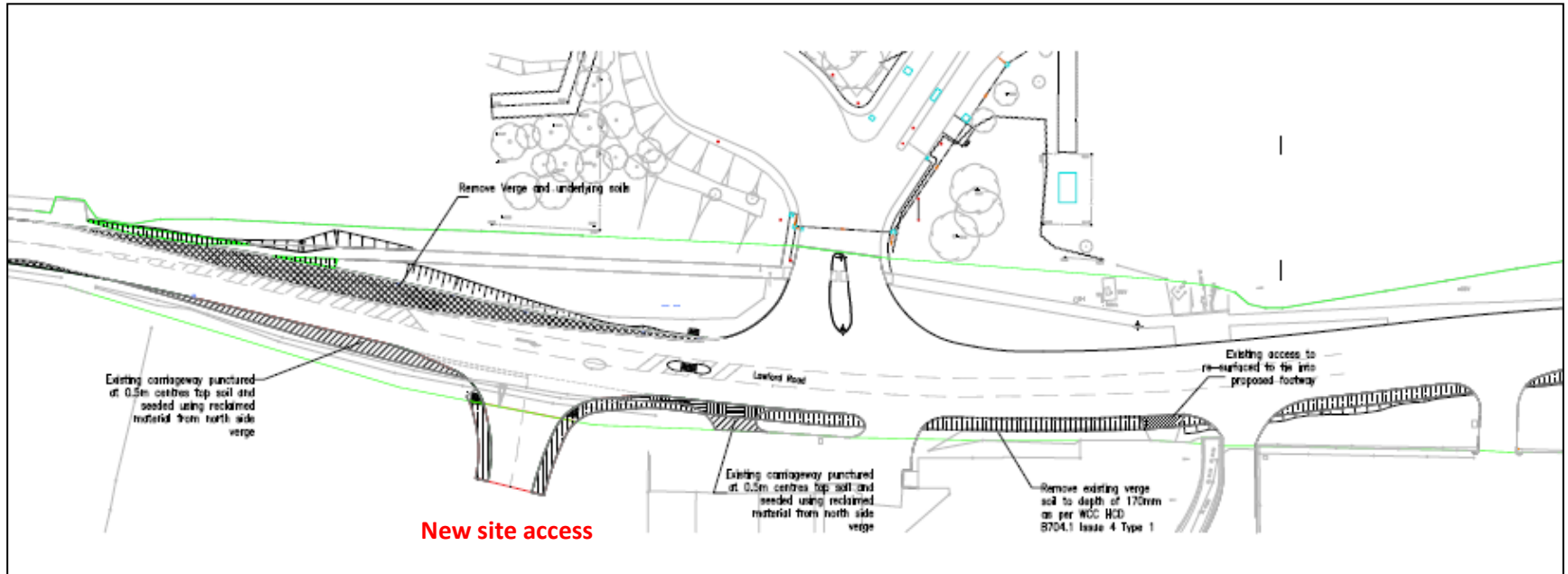
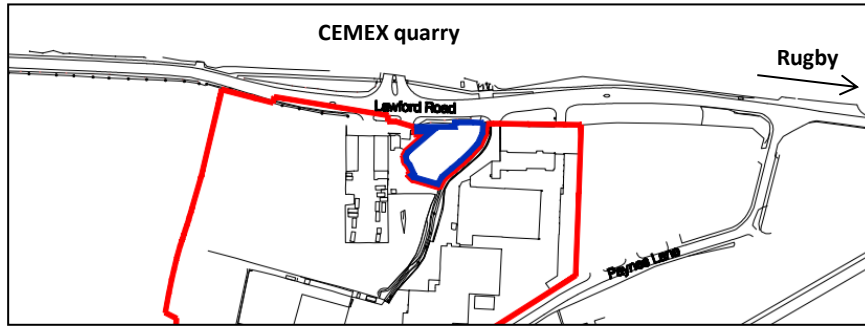
New access



Extracts from Planning and Access Report and Peter Evans Partnership drawing 2799.02RA

S278 scheme:  
A426 Southam Road, Southam at Griffin's Farm  
New site access and road restraint system

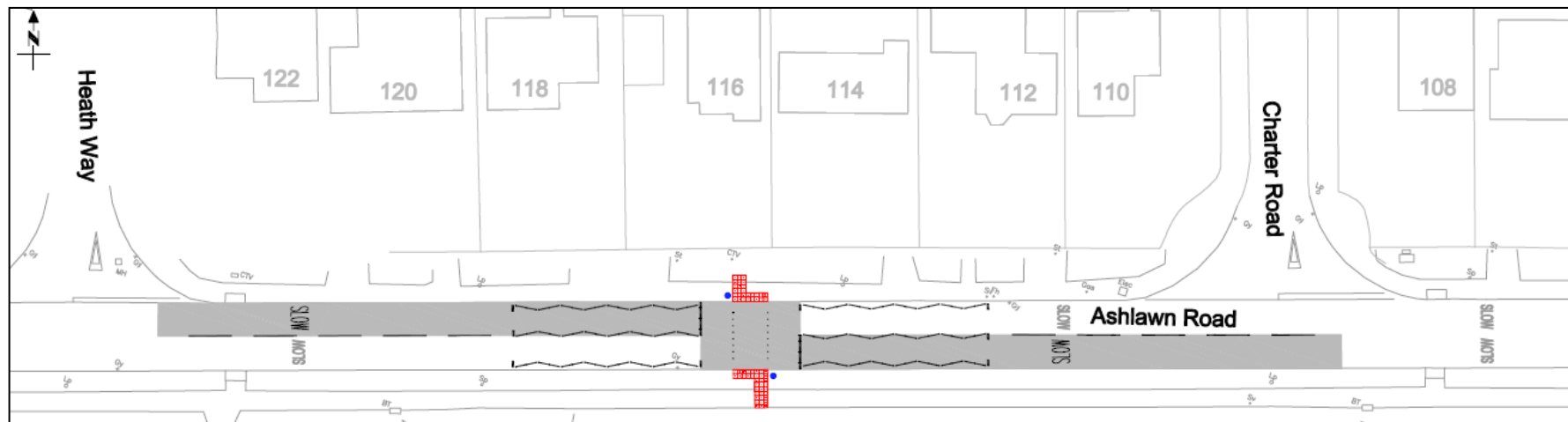
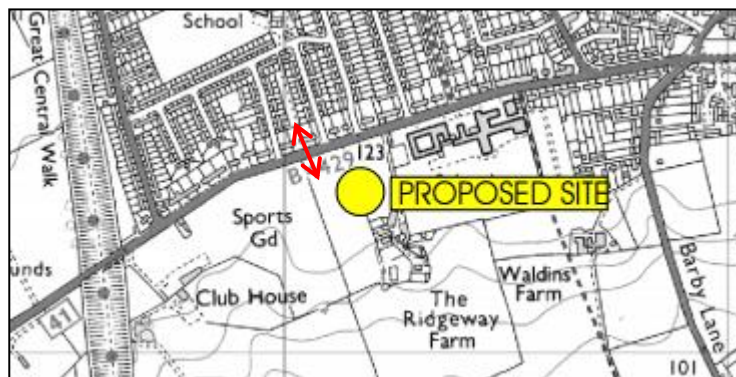
Location plan



Extracts from DCM drawing 841/B/011 and Fairhurst drawing 113136-PC-1020

S278 scheme:  
A428 Lawford Road, Rugby  
New site access

Puffin Crossing location shown by ↔



S278 scheme:  
B4429 Ashlawn Road, Rugby  
New Puffin crossing